



Chief Executive Office.

COUNTY OF LOS ANGELES

Kenneth Hahn Hall of Administration
500 West Temple Street, Room 713, Los Angeles, CA 90012
(213) 974-1101 ceo.lacounty.gov

CHIEF EXECUTIVE OFFICER

Fesia A. Davenport

April 11, 2023

To: Supervisor Janice Hahn, Chair
Supervisor Hilda L. Solis
Supervisor Holly J. Mitchell
Supervisor Lindsey P. Horvath
Supervisor Kathryn Barger

From: Fesia A. Davenport
Chief Executive Officer

ADDRESSING RV ENCAMPMENTS DURING COVID-19 RECOVERY (ITEM NO. 3, AGENDA OF JANUARY 11, 2022) AND ESTABLISHING A COUNTYWIDE RV ENCAMPMENT PILOT PROGRAM (ITEM NO. 15, AGENDA OF SEPTEMBER 13, 2022)

On September 13, 2022, the Board of Supervisors (Board) directed the Chief Executive Office - Homeless Initiative (CEO-HI) to consult with the Directors of Public Works (DPW), Public Health (DPH), Regional Planning (DRP), Health Services (DHS), and the Acting Director of Mental Health (DMH) and, in coordination with the Los Angeles County Sheriff's Department (LASD), the St. Joseph Vehicular Homeless Outreach Program (VHOP) and the Los Angeles Homeless Services Authority (LAHSA) to provide an updated assessment of Recreational Vehicle (RV) encampments, and options for expanding the RV encampment program. This motion supersedes a January 11, 2022, motion that requested the CEO-HI to provide recommendations on how to address RV encampments strategically and thoughtfully during the COVID-19 recovery. A report to the January 2022 motion was submitted on August 12, 2022.

This report will provide responses to the following directives from the September 13, 2022, motion:

1. Instruct the CEO-HI to consult with the Directors of DPW, DPH, DRP, DMH, and DHS, in coordination with LASD, VHOP, and LAHSA, to report back with an implementation plan for a 36-month pilot RV program.
2. Instruct the Executive Director of CEO-HI to work in partnership with the Directors of DPW, DPH, DRP, DMH, and DHS to include a recommended project budget and funding sources in the implementation plan for the RV encampment pilot program with success measures and deliverable goals.
3. Instruct CEO-HI and CEO Legislative Affairs and Intergovernmental Relations to help secure State and Federal dollars for the 36-month RV encampment pilot program by advocating through the annual State and Federal budget processes and applying for existing State and Federal grant opportunities created to support such programs as the RV encampment pilot program. This includes the



U.S. Department of Housing and Urban Development's 2022 Special Notice of Funding Opportunity to Address Unsheltered and Rural Homelessness, which is being coordinated locally by LAHSA, as well as Congress' Congressionally Directed Spending Requests.

4. Instruct the Director of DPH to report back with recommendations to employ sustainable solutions for proper disposal of waste to assist persons experiencing homelessness living in RVs, including mobile disposal of RV waste during the 36-month pilot project.
5. In support of the pilot project referenced in the 2nd directive, instruct the Director of DPW to collaborate with LASD and County Counsel to execute a contract to support the removal and dismantling of at least 900 impounded RVs in accordance with established County protocol for people living in RVs and abandoned RVs.
6. Instruct the Director of DPW in consultation with the Director of the Department of Arts and Culture to collaborate with an Artist in Residence program to support creative and low-cost beautification interventions in hot spot areas to deter re-population of RV encampments.
7. Instruct the Director of DPW to collaborate with the State on the pursuit of beautification grant funding, including but not limited to, Clean California.
8. Direct the Executive Director of CEO-HI to engage Service Planning Area leads for input in the implementation plan for the RV encampment pilot program.
9. Direct the Executive Director of CEO-HI to engage with the Council of Governments and cities to develop a framework for participation and partnership in the Countywide RV encampment pilot program.

Responses to Board Directives

Attachment I addresses Directive Nos. 1 and 2, which provides a plan for a 36-month pilot RV program, an estimated annual budget, and one-time costs. Attachment II provides responses to Directive Nos. 3-9.

The CEO-HI estimates that the RV Encampment Pilot program will require a \$21.8 million 12-month annual budget, with one-time costs of \$1.8 million. This estimated budget only includes funding for one safe parking site (the Motion requested at least one RV safe parking site for each Supervisorial District) and does not include RV storage lots for temporary storage prior to RV dismantling.

On February 7, 2023, the CEO-HI requested, and the Board approved \$7.0 million for the RV Encampment Pilot program for Fiscal Year 2023-24. The CEO-HI identified an additional \$6.0 million of Measure H underfund for this effort that will be included in an upcoming budget phase for the Board's approval. The \$13.0 million in identified funding is short of the estimated \$21.8 million of the 12-month annual operating funding needed; however, the first year will be a start-up year and will most likely not need the entire estimated amount. The initial \$13.0 million will allow the RV Encampment Pilot program to launch in May 2023.

The CEO-HI will be submitting an application to the State Encampment Resolution Funding (ERF-2) grant in April 2023 for additional funding to support the RV Encampment Pilot program. In addition, the CEO-HI will be proposing funding recommendations to the Board to support the County's declaration of emergency on homelessness, which will include funding to support the RV Encampment Pilot program. To achieve the goals of engaging 500 people and dismantling 300 inoperable RVs annually for three years, a significant amount of additional funding will be needed. CEO-HI will continue to work to identify additional funding sources as well as aligning existing resources to support the RV Encampment Pilot program.

Next Steps

- Based on RV hotspot data and existing RV engagement infrastructure, the initial launch of the RV Encampment Pilot program will begin in the Rosewood/Gardena community. Priority tasks to be completed prior to the initial launch include identifying a non-Measure H funding source for LASD HOST and securing an RV impound/storage site near the Rosewood/Gardena community. Projected launch is expected by May 2023.
- Lessons learned from the initial launch will inform how the other RV encampments across the County will be addressed and prioritized. Expansion of the RV Encampment Pilot program is projected for Summer 2023.
- The CEO-HI will assess the initial launch of the RV Encampment Pilot program to help inform any necessary revisions/updates to the RV encampment protocol, services, staffing, and budget.

Should you have any questions concerning this matter, please contact me or Cheri Todoroff, Executive Director of the Homeless Initiative and Affordable Housing, at (213) 974-1752 or ctodoroff@ceo.lacounty.gov.

FAD:JMN:CT
JR:RM:ns

Attachments

c: Executive Office, Board of Supervisors
County Counsel
Sheriff
Arts and Culture
Health Services
Mental Health
Public Health
Public Works
Regional Planning
Los Angeles Homeless Services Authority

Thirty-Six Month Countywide Recreation Vehicle Encampment Resolution Pilot Program for Los Angeles County

INTRODUCTION

On September 13, 2022, the Board of Supervisors (Board) instructed the Chief Executive Office-Homeless Initiative (CEO-HI) to consult with the Departments of Public Works (DPW), Public Health (DPH), Regional Planning (DRP), Health Services (DHS), and Mental Health (DMH), in coordination with the Los Angeles Sheriff's Department (LASD), the St. Joseph Center Vehicular Homeless Outreach Program (VHOP) and the Los Angeles Homeless Services Authority (LAHSA), to: 1) develop an implementation plan for a 36-month Recreational Vehicle (RV) Encampment Resolution Pilot (ERP) program, and 2) recommend a project budget and funding sources for the RV ERP.

On January 10, 2023, the Board voted to proclaim a State of Emergency (SOE) for homelessness in the County of Los Angeles (County). Under the SOE, the County is focusing on three missions: 1) encampment resolution, which seeks to reduce unsheltered homelessness using a systematic approach conducted in partnership with local jurisdictions; 2) housing which is focused on increasing interim and housing placements; and 3) providing mental health and substance use disorder services to unsheltered and sheltered people experiencing homelessness at the level needed to meet their needs. As the County rolls out more resources to support the three SOE missions, the CEO-HI will seek to align more resources with the RV ERP.

DIRECTIVE NO. 1: IMPLEMENTATION PLAN FOR A 36-MONTH PILOT RV PROGRAM

Since September 2022, the CEO-HI has been convening a workgroup consisting of representatives from DPW, DPH, DRP, DHS, DMH, LASD, County Counsel, VHOP, LAHSA, and the Department of Arts and Culture to develop the implementation plan for the RV ERP and recommended budget. This report includes the following:





- RV Homeless Encampment Protocol
- Key Components of the RV ERP
- RV ERP Recommended Budget and Funding Sources
- Initial RV ERP Implementation
- Next Steps

RV HOMELESS ENCAMPMENT PROTOCOL (RVHEP)

The CEO-HI currently administers and oversees the County's Encampment Protocol (CEP), which applies to encampments of five people or more that are within unincorporated areas of the County, County-owned and managed properties, and

cities where LASD is the contracted law enforcement agency.¹ A subgroup consisting of CEO-HI, LAHSA, LASD, and DPW was formed to develop a draft protocol to address RV encampments. The subgroup determined that a separate protocol was needed to specifically address vehicular homelessness rather than adding RV specific provisions to the existing CEP. Addendum I provides a detailed draft of the RVHEP that was developed by the subgroup and vetted by the workgroup.

The RVHEP will be used to identify, prioritize, and assist individuals and families living in RVs. The CEO-HI will utilize the existing Homeless Encampment Automated Request Submission (HEARS) system to capture homeless encampment data that meets the requirements of the RVHEP. The HEARS system will be used to coordinate encampment resolutions and coordinate the activities for responding to RV encampments. The following is a summary of the RVHEP process:

STEP 1: HOMELESS ENCAMPMENT AUTOMATED REQUEST SYSTEM (HEARS)	
	LAHSA, LASD, or DPW submit a request via the Homeless Encampment Automated Request System (HEARS) to initiate an encampment resolution protocol.
STEP 2: INITIAL SITE ASSESSMENT	
	LAHSA, LASD, and DPW conduct a site assessment within three business days, when possible, and update the HEARS with their findings, including photos.
STEP 3: OUTREACH	
	<ul style="list-style-type: none"> • Encampment resolution includes coordinated outreach by LAHSA and its homeless services providers to connect unhoused people living in RVs to interim or permanent housing, transportation assistance, storage of personal items, and other services as needed. • LASD identifies ownership of the RVs, and DPH conducts environmental assessment.
STEP 4: TIMELINE NOTIFICATIONS	
	Signs are posted at the RV encampment site, providing at least two weeks' notice of an encampment resolution. The time frame can be shortened under certain circumstances, such as for safety reasons. Outreach continues as needed.

¹ The LASD provides municipal police services to the following contracted cities: Agoura Hills, Artesia, Avalon, Bellflower, Bradbury, Calabasas, Carson, Cerritos, Commerce, Compton, Diamond Bar, Duarte, Hawaiian Gardens, Hidden Hills, City of Industry, La Cañada Flintridge, La Habra Heights, Lakewood, La Mirada, Lancaster, La Puente, Lawndale, Lomita, Lynwood, Malibu, Norwalk, Palmdale, Paramount, Pico Rivera, Rancho Palos Verdes, Rolling Hills, Rolling Hills Estates, Rosemead, San Dimas, Santa Clarita, South El Monte, Temple City, Walnut, West Hollywood, and Westlake Village.

STEP 5: ENCAMPMENT RESOLUTION



Final encampment resolution occurs on the day indicated on the posting notification.

- If unsheltered people experiencing homelessness remain at the site, a collaborative engagement effort will be made to help connect them to housing and services.
- Remaining RVs will be towed and either stored or dismantled. If stored, information on the tow location will be provided to the legal, registered owner, or interested party.

KEY COMPONENTS OF THE RV ENCAMPMENT RESOLUTION PILOT (RV ERP)

The following are key components of the RV ERP that were requested by the Board to be included in the implementation plan.

➤ **Connecting people living in RVs to housing options inclusive of hotel vouchers.**

Since 2018, the CEO-HI has administered an agreement with St. Joseph Center to implement VHOP to work closely with LAHSA and LASD to address RV homelessness in the unincorporated area of Supervisorial District 2. VHOP provides case management services, mental health and substance abuse assessment and treatment, benefits access and enrollment, and employment services. Connecting clients to interim and permanent housing is an essential component of the program. Interim housing resources include motel vouchers, interim housing, and safe parking sites. Permanent housing resources include housing navigation, matching to rental subsidies, including Federal vouchers and time-limited subsidies, housing retention services, and eviction prevention services. The VHOP model will be explored to be expanded countywide as the RV ERP expands.

As the RVHEP is expanded countywide, existing interim and permanent housing resources will continue to be used. In addition, new interim housing resources, such as hotel and motel vouchers and additional time-limited subsidies, will be incorporated into the program using funding that has already been allocated to support the RV ERP and new funding as it is identified. CEO-HI will soon be proposing funding recommendations to the Board to support the County's emergency declaration for homelessness and associated missions. Strategic investment in interim housing tied to encampment resolution, as well as expansion of the time-limited subsidy program, will be included in the recommendations.

➤ **Assessing and connecting people to appropriate support services, including existing County mainstream programs and services such as mental health, physical health, substance use disorder services, and social services.**

LAHSA/LASD HOST teams will work closely with DHS, DMH, DPH, and service providers to assess and link clients to supportive services, including mainstream County services. Both DHS and DMH are in the process of expanding the number of

their outreach teams. DHS has Multi-Disciplinary Teams (MDTs), which include health specialists, mental health specialists, substance use specialists, persons with lived experience, and case managers. DMH’s Homeless Outreach & Mobile Engagement (HOME) teams include a clinical supervisor, psychiatrist, licensed clinicians, substance use disorder counselor, nurse, case managers, and peers. The MDTs and HOME teams will partner with LAHSA to support clients served through the RV ERP. These teams assess the needs of unsheltered clients, provide services in the field, and directly link clients to County mainstream services.

The RV ERP will also be supported by the new DHS mobile clinic program for people experiencing homelessness. The mobile clinics provide primary, urgent, and women's health care to unsheltered people countywide. Services also include psychiatry, substance use disorder treatment with medications and counseling, prenatal care, and links to housing and other social supports.

- **Establishing at least one Safe Parking RV site in each Supervisorial District informed by best practices for Safe Parking, including support services and safety protocols. The Safe Parking RV sites selection should be informed by the 2022 Point-In-Time Homeless Count and in coordination with the respective Supervisorial offices.**

Table 1 shows the number of vehicles by Supervisorial District per the LAHSA 2022 Point-In-Time Count. The data shows that the largest number of RV/camper hot spots are located in Supervisorial District 2 (2,579), followed by Supervisorial District 5 (1,560), Supervisorial District 3 (1,466), Supervisorial District 1 (1,048), and Supervisorial District 4 (525) respectively.

Table 1. Number of Vehicles by Supervisorial District, Los Angeles Continuum of Care, 2022²

Los Angeles County Supervisorial District (SD)*	Campers/RVs
SD ²¹ 1	1,048
SD ²¹ 2	2,579
SD ²¹ 3	1,466
SD ²¹ 4	525
SD ²¹ 5	1,560
Grand Total	7,178

CEO-HI has engaged CEO-Asset Management to identify potential County-owned sites for safe parking in the five Supervisorial Districts. Finding viable areas has been challenging because safe parking for RVs would need to be operated 24 hours per day, have the necessary hookups to sustain an RV (e.g., wastewater, electricity,

² Source: 2022 Los Angeles Point-in-Time Homeless Count. The data in this table uses Supervisorial District boundaries from 2012-2021.

propane, etc.), and be large enough to accommodate at least 10 RVs/campers. In order to achieve economies of scale, 25 RVs/campers per site would be ideal. Additionally, case management, supportive services, and security would also be needed on-site at the safe parking site.

Elements for consideration for RV safe parking sites include:

- Each stall will need to include individual hookups for sewer, power, and water.
- The site will require access to sewer, power, and water.
- The RVs must be owner-occupied with current license and registration.
- The RVs must be drivable.
- Ingress/egress will need to be clearly identified and conform with traffic safety rules and restrictions. However, it is highly recommended that RVs remain stationary once on the site and remain in place for the duration of the program for the safety of the people and property at the site.
- Features such as a dog run, and children’s play area may need to be constructed.
- Security provisions, including privacy fencing and access control measures.

The CEO-HI previously assisted in the development of two safe parking programs known as “Safe Landing.” Safe Landing was part of a program that provided State-owned trailers to local jurisdictions to serve as interim shelter for families. The program has since ended; however, one of the sites in Supervisorial District 2, which is currently owned by the County, could potentially be used for a 24-hour RV safe parking program. The CEO-HI is investigating the feasibility of reactivating this site.

The CEO-HI continues to explore various County-owned sites, as well as properties managed by the State (for example, Cal Trans), Metro, School Districts, and local Water Districts to identify viable, safe parking sites in each Supervisorial District.

➤ **Establishing guidelines, roles, and responsibilities for expediting the dismantling of RVs that are inoperable, that fail to meet current vehicle code or are voluntarily surrendered by owner.**

LASD will be in the best position to confirm if a dilapidated RV is inoperable and/or fails to meet the current vehicle code. LASD, in coordination with LAHSA and RV ERP service providers, will communicate with RV occupants to determine if RVs will be voluntarily surrendered.

Roles and responsibilities for expediting the dismantling of RVs that are inoperable, that are a public health hazard, that fail to meet current vehicle code or are voluntarily surrendered by owner are outlined in Addendum 2, RV Tow Process Flow Chart. The flow chart shows the different vehicle codes that will be used to impound vehicles. LASD will need to determine if the RV will be eligible for dismantling. If so, LASD will obtain a certificate of destruction from the recycler to ensure the RVs are destroyed and cannot be resold. LASD will work with DPH to determine if any environmental issues need to be addressed.

A critical component of this program is to identify an impound/storage lot to store RVs since many RVs are not occupied by their owners. As noted in the August 12, 2022, Board report, the severe condition of these RVs makes it difficult to locate identifying information. Vehicle Identification Numbers are often hard to read or scratched out. According to VHOP, of the 224 campers/RVs encountered by the outreach teams, only about 10 percent had license plates/current registration, and the remaining 90 percent had missing plates or expired registration. LASD will need to use the impound/storage lot to keep RVs for a limited amount of time while conducting their due process (i.e., contact the RV owners and give them proper notice that the RV will be dismantled, etc.).

Site Specifications have been developed for the active search to identify property to support this. CEO-Asset Management is canvassing County and State-owned properties to determine if there are any sites that can be used for the storage of RVs.

Below are some of the parameters that are needed in order to identify a storage lot:

- A central location within Los Angeles County
- Freeway access
- Three to five acres
- Level ground, only minimal grading
- Paved surface preferred
- Two lanes in each direction, with preferred left turn lane (curb to curb width 50 feet)
- The entrance to the facility must be at least 50 feet wide
- Perimeter fence for security and safety
- Utilities existing on-site – at a minimum, electricity
- Minimum of 140 feet in a straight line to load and unload
- Guard shack

Additionally, the workgroup is investigating whether there are any revisions and/or new ordinances to the existing County Code for the establishment of a Los Angeles County Abandoned Vehicle Abatement (AVA) program. The California Highway Patrol developed the AVA Program to provide guidance to counties who wish to develop and administer AVA Authorities. The AVA Program is a means to remove abandoned vehicles that create a public nuisance and a health or safety hazard. Currently, there are 37 counties in California participating in the AVA program; however, Los Angeles County is not currently participating. This program could potentially collect funds from vehicle registration fees, which would then be used to offset the costs of removing inoperable RVs. The workgroup will continue to investigate the possibility of creating an AVA for the County.

➤ **Establishing guidelines, roles, and responsibilities for ensuring proper disposal of RV waste.**

RVs That Will Be Dismantled

Once RVs have been identified for dismantling, there are several guidelines that will need to be taken into consideration for ensuring proper disposal of RV waste. The draining of RV black- and gray water tanks should only be performed by persons properly trained to clean up sewage and wastewater discharge, who are equipped with the proper personal protective equipment, and are provided the equipment needed to properly contain and remediate any spillage of black or gray water. DPH evaluated two approaches to waste tank disposal for RVs that will be or have been impounded pending dismantling:

- Contracting companies that operate sewage pumper trucks to provide collection of wastewater directly from RVs located at an impound yard. DPH licenses approximately 175 companies to operate a total of 730 sewage pumper trucks within the County. Pumper trucks normally service septic tanks and portable toilets. These trucks include a waste tank with a vacuum pump to remove waste from a holding tank and a freshwater tank with a hose to provide water for cleaning and refilling the portable toilet holding tanks. Several pumper truck companies have indicated to DPH that it is possible to safely service RV waste tanks using a sewage pumper truck. It is recommended that a contract be entered into with one or more sewage pumper truck companies to provide weekly service at each impound yard.
- RVs towed to local dump station for servicing prior to impounding. Under this approach, owners of RV dump stations can be solicited to determine if they would be willing to enter into a contract with the County to provide services to RVs being towed to their location by a contracted tow service. RVs impounded by the LASD would be towed to the closest contracted dump station for servicing prior to holding for disposition at an impound yard.

DPH conducted an internet search to identify locations advertising services as an RV dump station. A total of 54 locations were identified, with the majority of which are in Supervisorial Districts 4 and 5, but at least four locations were identified in each Supervisorial District. Challenges of this approach include: many dump stations are self-service, requiring the tow truck driver to drain the wastewater holding tanks, and this exposes a person not properly trained or equipped to potentially be exposed to sewage; limited number of dump stations in some Supervisorial Districts; and in cases where waste tanks are leaking, a containment device would need to be employed under the RV when in tow to prevent the unsafe discharge of wastewater onto the street or other location.

Since it would require multiple RV tow trips (i.e., a tow trip from the encampment to the dump station, a separate tow trip to the storage/impound lot, and a third tow

trip to the dismantler), the workgroup recommends utilizing the first listed approach of contracting sewage pumper trucks to collect wastewater directly from RVs.

RVs at Safe Parking Sites

The solution for wastewater services for safe parking RV sites would need to be assessed and determined for each RV safe parking site before the site becomes operational. Typically, any service and costs associated with operating the site would be built into the operating agreement and budget with the site operator. The options for wastewater disposal ranked from safest to least safe methods include 1) providing hookups to potable water and the municipal sewer system, 2) contracting with sewage pumper truck companies to service each site weekly, and 3) contracting with self-service dump stations. Addendum 4 has additional information on these three options.

➤ **Establishing incentives for RV residents to transition to housing options such as temporary storage of their RV.**

Incentives are included in the RV ERP budget. Examples of incentives include:

- Gas cards
- Permanent housing placement support (deposits, move-in expenses, etc.)
- RV safe parking and interim housing
- Mechanical assistance
- Wastewater disposal
- Gift cards (food and personal items)
- RV buyout for disposal

DIRECTIVE NO. 2: RV ERP RECOMMENDED BUDGET AND FUNDING SOURCES

In the September 13, 2022, Board motion, the Board directed the CEO-HI to work in partnership with the workgroup participants to include a recommended project budget and funding sources in the implementation plan for the RV ERP with deliverable goals that include:

- (a) A target to engage at least 500 people living in RVs annually and dismantling a minimum of 900 inoperable RVs (i.e., 300 per year) during the 36-month pilot program;
- (b) Alignment and coordination of existing County programs and services for unhoused individuals; and
- (c) In coordination with St. Joseph Center's VHOP team, LASD Homeless Outreach Service Team, and all appropriate departments, determine the staffing needs to expand the VHOP model to all Supervisorial Districts, following the recommendation in the report back to establish teams for the clean-up effort and of the RV encampment pilot program throughout the County.

Addendum 3 provides a draft budget for the RV ERP program. The total cost of the program is estimated at \$21.8 million for a 12-month annual budget, which accounts

for the cost of engaging 500 people living in RVs, dismantling 300 inoperable RVs, establishing one Safe Parking site, staffing, client incentives, housing navigation slots, time-limited subsidies, and community beautification. In addition, there are estimated first year one-time costs of \$1.8 million.

CEO-HI has identified \$13.0 million to fund RV ERP to date. This includes the \$7.0 million that CEO-HI requested, and the Board approved on February 7, 2023, and an additional \$6.0 million of Measure H underfund that will be included in an upcoming budget phase for the Board's approval. The estimated annual budget does not include costs for safe RV Parking sites, and temporary storage sites would be used to store the RVs while ownership of the RV is determined. Additional time is needed to identify viable sites for both safe RV safe parking and temporary storage.

Although LASD HOST teams were included in the budget, Measure H has not historically been used for law enforcement; thus, alternate funding sources will need to be identified. The CEO-HI recommends that funding be identified through one or a combination of the following sources:

- LASD funding within their existing budget
- AB 109 funding
- Supervisorial District discretionary funding

The CEO-HI will continue to work with the workgroup to attempt to identify additional funding sources to support this project to meet the goals established by the Board's motion.

INITIAL RV ERP IMPLEMENTATION

The CEO-HI and workgroup utilized RV hot spot information to assist in identifying the first area to initiate the RV ERP. Table 2 shows the top 10 Census Tracts where most of the campers/RVs are in the County, which are all in Supervisorial Districts 2 and 5. The CEO-HI and the workgroup have selected the Rosewood/Gardena community as the initial area to implement the RV ERP because of several combined factors, which include: VHOP is already established and operating in the area, a potential RV safe parking site has been identified nearby, a towing company experienced in towing RVs has been identified, and there are a few leads on identifying an RV storage lot in the area.

Table 2. Top 10 Census Tracts with Most Vehicles, Los Angeles Continuum of Care, 2022³

Census Tract	City	Community Name	SPA	SD	Total Campers/RVs
911001	Unincorporated	Littlerock/Juniper Hills	1	5	403
541001	Unincorporated	Rosewood/East Gardena	6	2	349
910002	Unincorporated	Littlerock/Pearblossom	1	5	188
241002	Los Angeles	Green Meadows	6	2	113
540902	Unincorporated	Willowbrook	6	2	111
900102	Unincorporated	Hi Vista	1	5	128
535102	Unincorporated	Florence-Firestone	6	2	39
910001	Palmdale	Palmdale	1	5	109
206300	Los Angeles	Downtown	4	2	11
535400	Unincorporated	Florence-Firestone	6	2	75

NEXT STEPS

- Unless otherwise directed by the Board, the CEO-HI and the workgroup will continue planning and preparing for the initial launch of the RV ERP in the Rosewood/Gardena community. Priority tasks to be completed prior to initial launch include identifying non Measure H funding for LASD HOST and securing an RV impound/storage site near the Rosewood/Gardena community. The projected launch is expected by May 2023.
- Lessons learned from the initial launch will inform how the other RV encampments across the County will be addressed and prioritized. Expansion of the RV ERP is projected for Summer 2023.
- The CEO-HI will assess the initial launch of the RV ERP to help inform any necessary revisions/updates to the RVHEP, services, staffing, and budget.

³ Source: 2022 Los Angeles Point-in-Time Homeless Count

Responses to Board Directive Nos. 3-9

Below are responses to Board Directive Nos. 3-9 of Motion from September 13, 2022.

Directive No. 3: Instruct CEO-HI and CEO Legislative Affairs and Intergovernmental Relations to help secure State and Federal dollars for the 36-month RV encampment pilot program by advocating through the annual state and federal budget processes and applying for existing State and Federal grant opportunities created to support such programs as the RV encampment pilot program. This includes the U.S. Department of Housing and Urban Development's 2022 Special Notice of Funding Opportunity to Address Unsheltered and Rural Homelessness, which is being coordinated locally by LAHSA, as well as Congress' Congressionally Directed Spending Requests.

The State of California released a Notice of Funding Availability (NOFA) for the second disbursement of FY 2022-23 Encampment Resolution Funding (ERF-2) on December 1, 2022. The ERF program provides competitive grant funding to counties, cities, and Continuums of Care (CoCs) for local demonstration projects that address critical encampment concerns and help transition individuals into stable housing. The second disbursement of ERF-2 provides approximately \$240 million of the total \$700 million authorized in the 2022-23 State Budget Act over the next two years, with priority consideration for projects located in the State right of way. The RVHEP Workgroup is planning to submit an application for this NOFA in April 2023.

In addition, the U.S. Department of Housing and Urban Development released a Special Notice of Funding Opportunity (SUNOFO) to Address Unsheltered and Rural Homelessness in 2022. The Los Angeles Homeless Service Authority (LAHSA) submitted an application and was awarded \$60 million over a three-year period to promote targeted efforts that will reduce unsheltered homelessness and tailor solutions to those living in prioritized encampment locations. LAHSA will work to align the SUNOFO work with the County's unsheltered work-targeted encampments.

Lastly, Congressionally Directed Spending Requests (also known as "Congressional earmarks" or "Community Project Funding") allow members of Congress to request direct funding on behalf of a government or non-profit agency for projects that benefit the communities they serve. These requests are made through the annual appropriations process – in tandem to the President's Budget proposal for the upcoming federal fiscal year – and all earmark requests must meet applicable eligibility requirements for the account from which the account is made (e.g., Economic Development Initiative, Transit Infrastructure Projects, or Clean Water State Revolving Fund). Generally, funding is requested for a specific community project in a specified location, and funding must be expended within one year of receipt. This year, members of Congress solicited earmark applications from early to mid-March 2023. Since RV ERP has not yet started, the CEO-HI will explore submitting a request during the solicitation process in 2024 for the Federal Fiscal Year (FY) 2025 appropriations cycle.

Directive No. 4: Instruct the Director of DPH to report back in writing with recommendations to employ sustainable solutions for proper disposal of waste to assist Persons Experiencing Homelessness living in RVs, including mobile disposal of RV waste during the 36-month pilot project.

DPH provided a response for this Directive on February 24, 2023 (see Addendum 4).

Directive No. 5: In support of the pilot project referenced in the Second Directive, instruct the Director of DPW to collaborate with LASD and County Counsel to execute a contract to support the removal and dismantling of at least 900 impounded RVs (i.e., 300 RVs per year) in accordance with established County protocol for people living in RVs and/or abandoned RVs.

LASD has jurisdictional authority and is the lead on the removal and dismantling of impounded RVs. DPW and County Counsel have continued to meet with LASD and provide support on an approach to achieve the goals of this directive.

LASD has a Memorandum of Understanding (MOU) with various tow yards in Los Angeles County. However, these tow yards may not have the capacity to support the removal of 300 RVs annually. The CEO-HI is seeking to identify additional storage/impound lots that can store RVs for a limited time while the owner of the RVs is identified and given due process before the RV is taken to the tow yard to be dismantled.

Directive No. 6: Instruct the Director of DPW in consultation with the Director of the Department of Arts and Culture to collaborate with an Artist in Residence program to support creative and low-cost beautification interventions in hot spot areas to deter re-population of RV encampments.

After meeting with DPW to explore options, the Department of Arts and Culture (Arts and Culture) respectfully recommends that the directive to launch an artist-in-residence for the RV Encampment Program be launched at a later phase. Arts and Culture and DPW will continue to meet regularly to identify opportunities to advance this directive as the RV Program is implemented. Once solutions for deterring RV re-population have been identified for each of the hotspot areas, Arts and Culture and DPW will explore potential art beautification interventions, including but not limited to artist residencies, commissioning artists, or engaging arts organizations, to create community-engaged art enhancements on obstacles and barriers, murals, and asphalt art. To preserve the opportunity to launch an artist-in-residence for the RV Encampment Program, a set aside of 2 percent of overall costs is recommended to be included in the budget.

Staff from the Arts and Culture and DPW have met to explore options for an artist-in-residence program to assist with beautification interventions and to deter re-population of RV encampments. Various options for engaging artists were identified. The proposed 2 percent set aside budget allocation could fund one of these options below.

- *Barrier Art Beautification.* DPW has been exploring the possibility of k-rails (concrete, steel-enforced barriers used to divide lanes of highway traffic), parklets, or other options to prevent the return of RVs once they have been removed. These barriers can also serve as opportunities for art beautification. For example, if k-rails or barriers were to be installed, they could be enhanced by an artist or artist team, as has been done previously in the City of New York through their grant-based New York Barrier Beautification Program. However, installing barriers could prevent businesses and residents from the use of the parking spaces vacated by RVs and could contribute to issues of equity and access. Further investigation and research by DPW will be required to determine if this is a viable and sustainable solution.
- *Hot Spot Art Beautification.* An artist-in-residence could be engaged to collaborate with community members on beautification interventions in hot spot areas. These could include activities such as co-creating a mural or asphalt art in or near an RV hot spot area. However, security concerns and criminal activity in these areas could cause an unsafe environment for artist engagement, as well as a higher risk of graffiti and tagging, which could quickly undermine the financial and community value of such an investment. Safety concerns would need to be addressed before this could be recommended as a prudent, viable, and sustainable alternative.
- *Safe RV Parking Art Beautification.* An artist-in-residence could also be engaged to collaborate with community members to co-create artwork beautification, such as murals, art on barriers or structures, or asphalt art at Safe RV Parking sites.

In summary, there are potential options for arts engagement, as contemplated in Directive No. 6 of the Board motion. However, any artist-in-residence or artist engagement project for the RV Encampment Program should take place after final solutions for each hot spot area have been identified and security concerns are addressed. Furthermore, because it is unlikely that an art beautification project, on its own, would deter the re-population of RV encampments, the project should be launched after, or in coordination with, the strategies and services of other Departments in the motion directives. As such, Arts and Culture will continue to work with DPW to identify the appropriate approach and timing to launch this directive in calendar year 2023 and/or 2024.

Directive No. 7: Instruct the Director of DPW to collaborate with the State of California on the pursuit of beautification grant funding including but not limited to Clean California.

To ensure that County departments work in a strategic and complementary fashion and do not compete for limited resources, the CEO will work with DPW to oversee the application for funding grants for which the County may be eligible. The Clean California Local Grant Program (CCLGP), with an April 2023 application deadline, is one example of funding that may be relevant for individual or collaborative projects with DPH, CEO-HI, and DPW, among others. The CCLGP is a competitive statewide

program created to beautify and clean up local streets and roads, tribal lands, parks, pathways, transit centers, and other public spaces.

Directive No. 8: Direct the Executive Director of CEO-HI to engage Service Planning Area leads for input in the implementation plan for the RV encampment pilot program.

The CEO-HI conducts quarterly meetings with the executive directors of the homeless services providers in each of the SPAs. Topics include annual Homeless Initiative funding recommendations, new framework to end homelessness, Blue Ribbon Commission on Homelessness recommendations, special projects, and initiatives, etc. During these meetings, population-specific providers requested dedicated time to discuss their unique systems, clients, and needs. CEO-HI will continue to meet quarterly with homeless service providers and ensure opportunities for smaller, sub-population conversations, including discussion of the implementation plan for the RV Encampment Resolution Program.

Directive No. 9: Direct the Executive Director of CEO-HI to engage with the Council of Governments (COGs) and cities to develop a framework for participation and partnership in the Countywide RV encampment pilot program.

CEO-HI has started engagement efforts with Cities and COGs around homeless encampment resolutions. An allocation of Measure H funding (\$65.0 million) is being earmarked to assist cities addressing homeless encampments that lead to permanent housing solutions. The CEO-HI will engage nearby cities when an RV encampment protocol is planned so that the cities and the County are aware of the potential impact of encampment resolutions and coordinate resources. The CEO-HI is convening regular meetings with the COGs to discuss potential ways to address homeless encampments. The topic regarding RV encampment resolutions has been discussed in past meetings and will be discussed during additional COG/City convenings in 2023.

Recreational Vehicle Homeless Encampment Protocol

Addendum 1

The **Recreational Vehicle Homeless Encampment Protocol (RVHEP)** is the process for reporting and responding to homeless recreational vehicle (RV) encampments by the Los Angeles County Chief Executive Office - Homeless Initiative (CEO-HI), Los Angeles County Sheriff Department (LASD), Los Angeles Homeless Services Authority (LAHSA), the Department of Public Works (DPW), Department of Public Health, and homeless service providers.

Step	Action	Tasks	Responsible Party/Entity/Comments
1.	Submit Homeless Encampment Automated Request Form (HEARS)	<ul style="list-style-type: none"> • Complete and submit a request for service in the Homeless Encampment Automated Request Submission (HEARS) system upon identification of a high concentration of people in RVs experiencing homelessness, in a given area. • The completed request will be routed to the CEO-HI team for review and to ensure all applicable information is included. • If no additional information is needed, CEO-HI will approve the RVHEP form and notify the Homeless Outreach Services Teams (HOST), which includes members from the LAHSA homeless engagement teams and specialty trained LASD deputies. 	<p>CEO-HI, LAHSA HOST, LASD HOST, & DPW</p> <p>The RVHEP applies only when five (5) or more vehicles are in close geographic proximity, as defined in County Code section 16.04.100.</p> <p>Once RVHEP has been initiated, unsheltered people and people in both motorized and nonmotorized vehicles being used for habitation, will be served.</p> <p>Locations with less than five RVs will be entered into HEARS and forwarded to the LA Homeless Outreach Portal for further processing.</p>

Step	Action	Tasks	Responsible Party/Entity/Comments
2.	Conduct Initial Site Assessment	<ul style="list-style-type: none"> • Upon notification of a RVHEP request, HOST, in coordination with DPW, will conduct a more in-depth site assessment of the vehicular encampment within 72 hours. HOST shall update the HEARS form with data compiled from the assessment. • After the assessment, a recommendation will be made to CEO-HI on the resources and timeline needed to address the RVHEP request. Barring an exigency, the minimum timeline for posting notification will be 14 calendar days. • LAHSA HOST will begin outreach and complete a Coordinated Entry System (CES) assessment for all dwellers present, when possible, and connect clients to the appropriate CES provider to be connected to additional supportive services. • LASD HOST will engage the Department of Motor Vehicles (DMV) and the California Highway Patrol (CHP), as needed, to identify ownership of vehicles. • DPH will conduct an environmental assessment of the impact to the people living in vehicles and to the community and provide recommendations accordingly. <p>CEO-HI will utilize the following criteria in establishing prioritization based on available resources:</p> <ul style="list-style-type: none"> • RV encampments near schools • High density of RV encampments (i.e., large number of RVs in close proximity to each other) • Exigency/safety concerns • Priority locations: to be determined 	CEO-HI, HOST, DPH
3.	Conduct Outreach	<ul style="list-style-type: none"> • Based on HOST's reported findings and recommendations, the CEO-HI team, in coordination with the CES Outreach Coordinator and/or homeless services provider, will determine future actions(s) needed to provide resolution. Actions include: <ol style="list-style-type: none"> 1. Provide a timeline for ongoing outreach/engagement. 2. Develop an outreach strategy to successfully engage people experiencing homelessness (PEH) in RVs and connect to services/shelter. 	CEO-HI, HOST, & DPW Prior to a collaborative event, LAHSA is responsible for continued outreach/engagement and for identifying housing opportunities available to PEH still on site.

Step	Action	Tasks	Responsible Party/Entity/Comments
		<ul style="list-style-type: none"> • HOST will lead coordination of outreach and engagement among service providers and community stakeholders. • LAHSA HOST will complete the appropriate referrals and assessments for all PEH present, when possible, and connect clients to the appropriate CES resources. Service providers shall assist LAHSA and coordinate services collaboratively. • Based on CES findings, the appropriate County Department(s), e.g., Health Services, Mental Health, Public Health, Public Social Services, Aging and Disabilities, etc., may be contacted to provide additional support. When necessary, the listed Departments will conduct ongoing site visits with LAHSA. • LAHSA HOST and the service provider will also determine if clients may be eligible for incentives. 	Based on the geographic location of each site, the CES Outreach Coordinator will compile a list of identified homeless service provider agencies with potential housing and supportive service opportunities.
4.	Post Timeline Notifications	HOST and/or DPW will post signage at the encampment site two weeks prior and one week prior to the expiration of the timeline notifying inhabitants of the “final encampment resolution date”.	HOST & DPW
5.	Final Encampment Resolution Date	<p>If on the final day of an encampment resolution timeline there are still PEH inhabiting the RVs:</p> <ol style="list-style-type: none"> a. A collaborative engagement effort will be conducted with participation from HOST, appropriate County departments, service providers, and community-based organizations, to provide another opportunity to connect homeless individuals to services and shelter. b. Vehicles (both motorized and unmotorized) still on-site will be towed pursuant to California Vehicle Code (CVC) provisions or as identified as a public health hazard by DPH. Information on the tow location will be provided to the legal owner/registered owner or interested party. c. If the PEH is not the registered owner, they will need to remove their belongings from the vehicle. d. Personal items that a person cannot move/take with them will be stored at a nearby location for a minimum of 90 days. Personal items include important documents, medication, and high value items. e. Persons are provided a phone number, hours of operation, and location where they can retrieve their belongings. 	HOST, DPH, & DPW

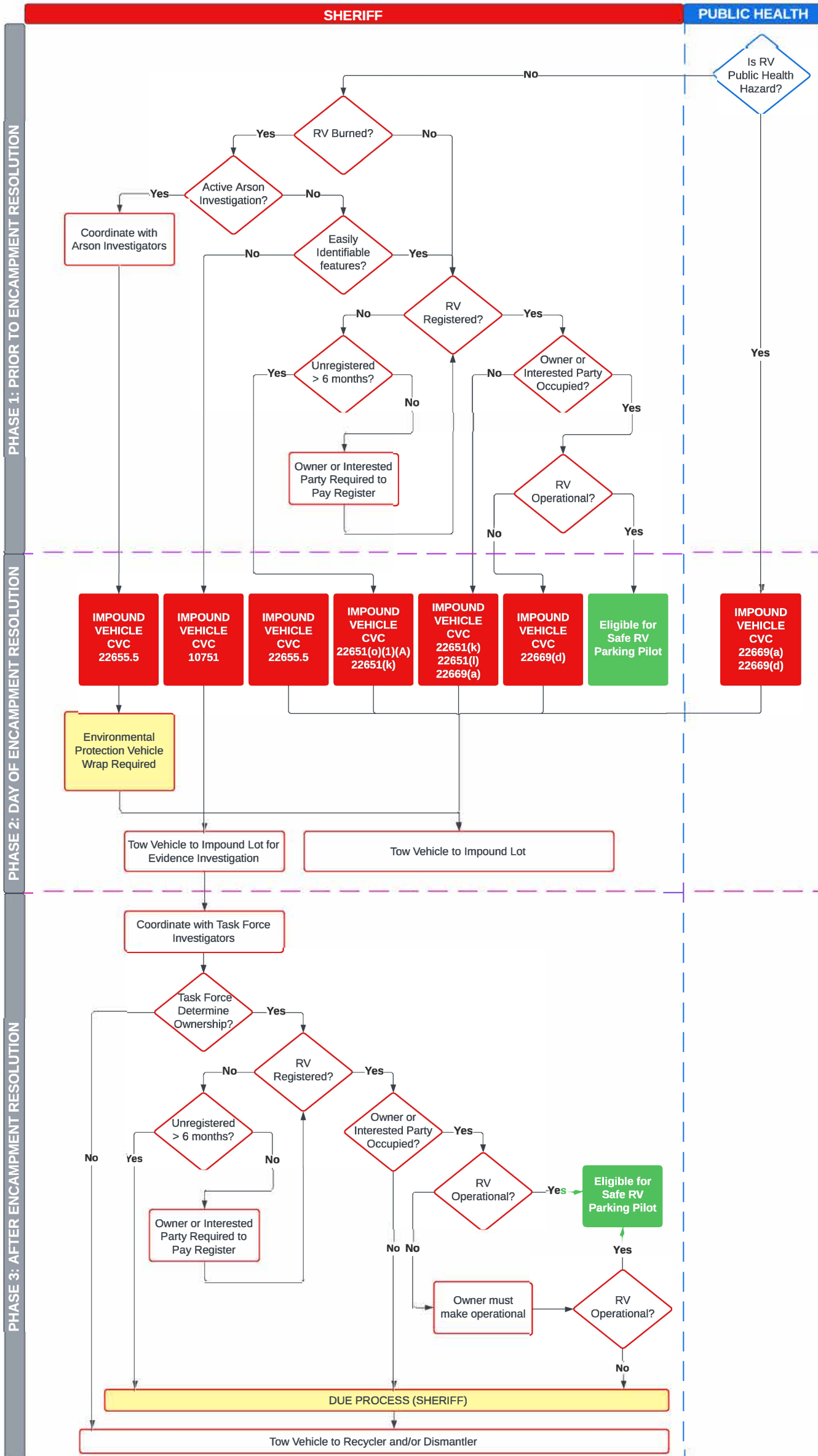
Step	Action	Tasks	Responsible Party/Entity/Comments
		<p>If there are no longer inhabitants on-site on the final day of the encampment resolution date:</p> <ul style="list-style-type: none"> a. LAHSA and LASD HOST will continue to observe the location in the event PEH return to the location and fencing/walls will be repaired if necessary (paid for by the property owner*). b. If people return, outreach and engagement will be conducted to offer services and shelter connections (shelter placements can only take place if there is bed availability). <p>After the final encampment resolution date occurs, information on the outcome, including photos, will be uploaded in to the HEARS system to close-out the RVHEP form.</p> <p>If the site is reinhabited, a 72-hour posting shall be provided to initiate another encampment resolution event.</p>	

*Owner of private property to decide if they want to erect a fence/wall or repair existing fence/wall.



RV PROCESS FLOWCHART

Last Updated: 2/14/23



**Draft Budget for the Countywide Recreational Vehicle (RV) Program
Year 1 of Program (500 Persons Engaged; Including 300 RVs Dismantled)**

Category	Projected Cost	Notes
Safe / RV Parking Program (Estimate of 1 site = 10 RVs)* Service provider is to be determined		
Program Operations	\$292,000	
RV Technician	\$75,000	
Security Services	\$216,000	
Propane Services	\$108,000	
Sewer Services (Pumper Truck Services to RVs)	\$39,460	
Trash Services	\$30,600	
Water and Power Services	\$98,400	
Site (County Property)	\$0	Additional costs to be determined
Safe Parking Service Provider Case Management Services	\$0	Additional costs to be determined
SubTotal	\$859,460	
Outreach		
LASD HOST Staff	\$3,135,000	11.0 FTE: 8 deputies, 2 detectives, 1 sergeant, 2 clerical staff, and services/supplies
LAHSA HOST Staff	\$5,345,000	24 teams (2.0 FTE per team) for entire county x \$222,668
Sewage Pumper Truck Vouchers	\$650,000	Estimate based on 200 RVs serviced weekly at \$62.50/ea.
SubTotal	\$9,130,000	
Department of Public Health		
Evaluations of RVs	\$75,000	Based on total cost of 0.5 FTE staff (includes assessment time, report write-up and drive time) for 500 RVs engaged yearly.
SubTotal	\$75,000	
RV Removal**		
Towing Contract	\$270,000	600 tows at \$450 per tow
Dismantling Contract	\$450,000	300 RVs at \$1,500 per RV
Mobile Wastewater Disposal at Storage/Impound Yard	\$18,750	300 RVs one-time service at \$50-\$75 per RV (average = \$62.50)
Storage of Personal Items	\$122,000	
SubTotal	\$860,750	
Department of Public Works		
Labor	\$889,560	
Equipment - Annual Operating Cost	\$160,000	
Contracts	\$2,000,000	Encampment debris removal

SubTotal	\$3,049,560	
Service Providers		
Service Provider Outreach Staff	\$1,000,000	8.0 FTEs
Interim and Permanent Housing Costs	\$6,000,000	200 clients x \$30,000 (includes interim shelter, motels, Time Limited Subsidies, move-in costs)
Client Service Funds (problem solving)	\$45,000	Includes incentives to RV owners
Housing Navigation	\$184,500	Based on 3.0 FTE Housing Navigators at \$50,000 per FTE and 23% fringe benefits.
SubTotal	\$7,229,500	
Chief Executive Office - Homeless Initiative		
HEARS Licensing (Yearly Cost)	\$11,550	\$350 per HEARS yearly licenses x 33 licenses
Consultant Support (Project Management)	\$180,000	
CEO-HI staff support	\$0	Additional costs to be determined
SubTotal	\$191,550	
Community Beautification		
Arts and Culture allocation (2% of the Total Budget)		
SubTotal	\$427,916	2% of overall budget
TOTAL BUDGET	\$ 21,823,736	

Category (One-Time)	Projected Cost	Notes
Department of Public Works		
Equipment	\$1,813,000	Purchase of five trucks, one trailer, and three storage containers
LA County Sherrif Department		
Equipment	\$347,000	Purchase three vehicles and radio equipment
TOTAL ONE-TIME COSTS	\$ 2,160,000	

Notes:

*The budget only includes an estimate for 1 safe parking site (10 RVs).

**The budget does not include the cost of a tow yard/impound yard, since those costs are still being determined.



BARBARA FERRER, Ph.D., M.P.H., M.Ed.
Director

MUNTU DAVIS, M.D., M.P.H.
County Health Officer

MEGAN McCLAIRE, M.S.P.H.
Chief Deputy Director

313 North Figueroa Street, Suite 806
Los Angeles, CA 90012
TEL (213) 288-8117 • FAX (213) 975-1273

www.publichealth.lacounty.gov

BOARD OF SUPERVISORS

Hilda L. Solis
First District

Holly J. Mitchell
Second District

Lindsey P. Horvath
Third District

Janice Hahn
Fourth District

Kathryn Barger
Fifth District

February 24, 2022

TO: Each Supervisor

FROM: Dr. Barbara Ferrer, Ph.D., M.P.H., M.Ed.
Director

**SUBJECT: ESTABLISHING A COUNTYWIDE RV ENCAMPMENT PILOT PROGRAM
(ITEM 15, BOARD AGENDA OF SEPTEMBER 13, 2022)**

This report is in response to the September 13, 2022, motion by Supervisors Holly Mitchell and Kathryn Barger directing the Department of Public Health (Public Health) to report back in writing in 120 days on recommendations to employ sustainable solutions for proper disposal of waste to assist persons experiencing homelessness living in recreational vehicles (RVs) including mobile disposal of RV waste during the 36-month pilot program.

The attached report provides options for mobile waste collection service for RVs eligible to be sited (i.e., RVs that meet current vehicle code requirements, are owner- or interested party-occupied, and do not present a public health hazard) at Safe Parking RV sites in Los Angeles County during the 36-month pilot program and includes available services and estimated costs for these services.

If you have any questions or would like additional information, please let me know.

BF:lf

Attachment

c: Chief Executive Office (CEO)
Acting County Counsel
Executive Office, Board of Supervisors
CEO Homeless Initiative

Establishing a Countywide RV Encampment Pilot Program Options for Wastewater Disposal for Persons Experiencing Homelessness Living in a Recreational Vehicle

Background

Recreational Vehicles (RVs) may provide the necessities for living, including facilities for cooking, sleeping, personal hygiene, and disposing of bodily wastes. When operated properly, RVs may provide a safe alternative to permanent housing. Of primary concern to public health, however, is the potential for the improper disposal of liquid waste.

RVs have two wastewater tanks: one for gray water (collecting kitchen sink, shower, and lavatory water) and one for blackwater (collecting toilet waste). A RV that requires a Class C or Class B driver's license has waste tanks that typically hold between 25-50 gallons of gray water and 25 - 35 gallons of black water that should be emptied when two-thirds full. Larger RVs usually have larger tanks. When "hook-ups" are not available to the public sewer system, RV waste tanks provide adequate space for a single person living in an RV to empty their waste tanks weekly. If potable water is provided through a holding tank rather than a connection to a municipal water supply, the amount of water available will limit the amount of gray water generated.

It is critical that RV waste be properly disposed to prevent environmental contamination, prevent exposure of waste to the public, and prevent disease. Disposal is normally performed through hook-ups to a sewer pipe draining to a municipal sewer system or septic tank or at an RV dump station. RV dump stations typically provide a curbed concrete slab with a central drain connected to the municipal sewer system or a septic tank. These facilities have the appropriate equipment to wash down any spills that occur during the drainage of waste. Public Health has identified approximately 54 locations in Los Angeles County where RV owners may dump their wastewater holding tanks (see attached map).

Another option for proper disposal of waste utilizes pumper trucks. Los Angeles County has approximately 175 companies that operate a total of 730 sewage pumper trucks. Pumper trucks normally service septic tanks and portable toilets. These trucks include a waste tank with a vacuum pump to remove waste from a holding tank and a freshwater tank with a hose to provide water for cleaning and refilling the portable toilet holding tanks. Several pumper truck companies have indicated to Public Health that it is possible to safely service RV waste tanks using a sewage pumper truck.

Potential Solutions

Public Health evaluated the following options for mobile waste collection service for RVs that are eligible to be parked (i.e., functional, meet current vehicle code requirements, and owner or interested party occupied) at a Safe Parking RV Site:

1. Providing a connection to a municipal sewer system

The preferred method of sewage disposal is for the Safe RV parking location to have available hook-ups for the municipal water supply and the public sewer system. This method provides the most sanitary disposal option by providing adequate potable water for daily cleaning, cooking, and removal of bodily waste.

This method does present a few challenges:

- a. Limits the number of places eligible to serve as a Safe Parking location.
- b. Adds expense needed to install water and sewer lines, if not already available.
- c. Potentially renders the RVs immobile unless RV owners are allowed to disconnect their RV to drive it from the Safe Parking location.
- d. Allowing RV owners to disconnect the hook-ups increases risk for a discharge of sewage to the ground surface.

2. Contracting Companies that Operate Sewage Pumper Trucks to Provide Collection of Wastewater Directly from RVs

This method involves the County entering one or more service contracts with any of the Sewage Pumper Truck companies operating within the county. Public Health contacted several companies that operate Sewage Pumper Trucks to determine whether a pumper truck could provide wastewater collection service directly to a RV. There was general agreement from the companies contacted that a pumper truck could provide service directly to an RV, including RVs parked on the street. The companies indicated that the risk of a wastewater spill is low when servicing an RV and they are equipped to clean any spills.

A contract could be entered to provide service for each of the Safe RV Parking locations with a prescheduled collection day(s) and time(s) arranged for the servicing of all the RVs at the location. Participating in the safe collection of wastewaters from their RVs should be a requirement of occupying a Safe RV Parking location to prevent the unsafe discharge of wastewater into the street or other location.

This method could also be expanded to provide service to Persons Experiencing Homelessness living in RVs who park on the street in RVs that have been determined not to be a public health hazard. In this method the County would contract with one or more companies to obtain service vouchers that could be distributed to Persons Experiencing Homelessness living in RVs. These vouchers would provide the contact information for the pumper truck company to allow Persons Experiencing Homelessness living in RVs to call to request service which would be reimbursed by the County to the Pumper Truck Company after the voucher was submitted for reimbursement.

Providing service to Persons Experiencing Homelessness living in RVs parked on the street would present challenges, including:

- a. The lack of a prescheduled date and time would require multiple trips to service the RVs each week, thereby increasing service costs.
- b. The need to provide vouchers to Persons Experiencing Homelessness living in RVs on a frequent basis for them to be able to obtain service as needed.

- c. Normally, after servicing an RV, water and chemicals are added to the toilet holding tank to reduce odors. Providing this service may require the technician to enter the RV as part of the service which could pose security concerns. Not providing this portion of the service may result in nuisance odor complaints.
- d. Contract monitoring requirements to ensure that services billed were performed.

3. Contracting with companies that operate RV dump stations to provide services to Persons Experiencing Homelessness living in RVs

This method requires the RVs to be able to safely travel to the service location. Under this proposal, the operators of dump stations near the Safe RV Parking locations can be solicited to determine if locations are open to the public, if there is a charge to utilize the dump station, and if operators would be willing to enter a contract with the County wherein the County would purchase payment vouchers and issue them to Persons Experiencing Homelessness living in RVs so that they may utilize the dump station.

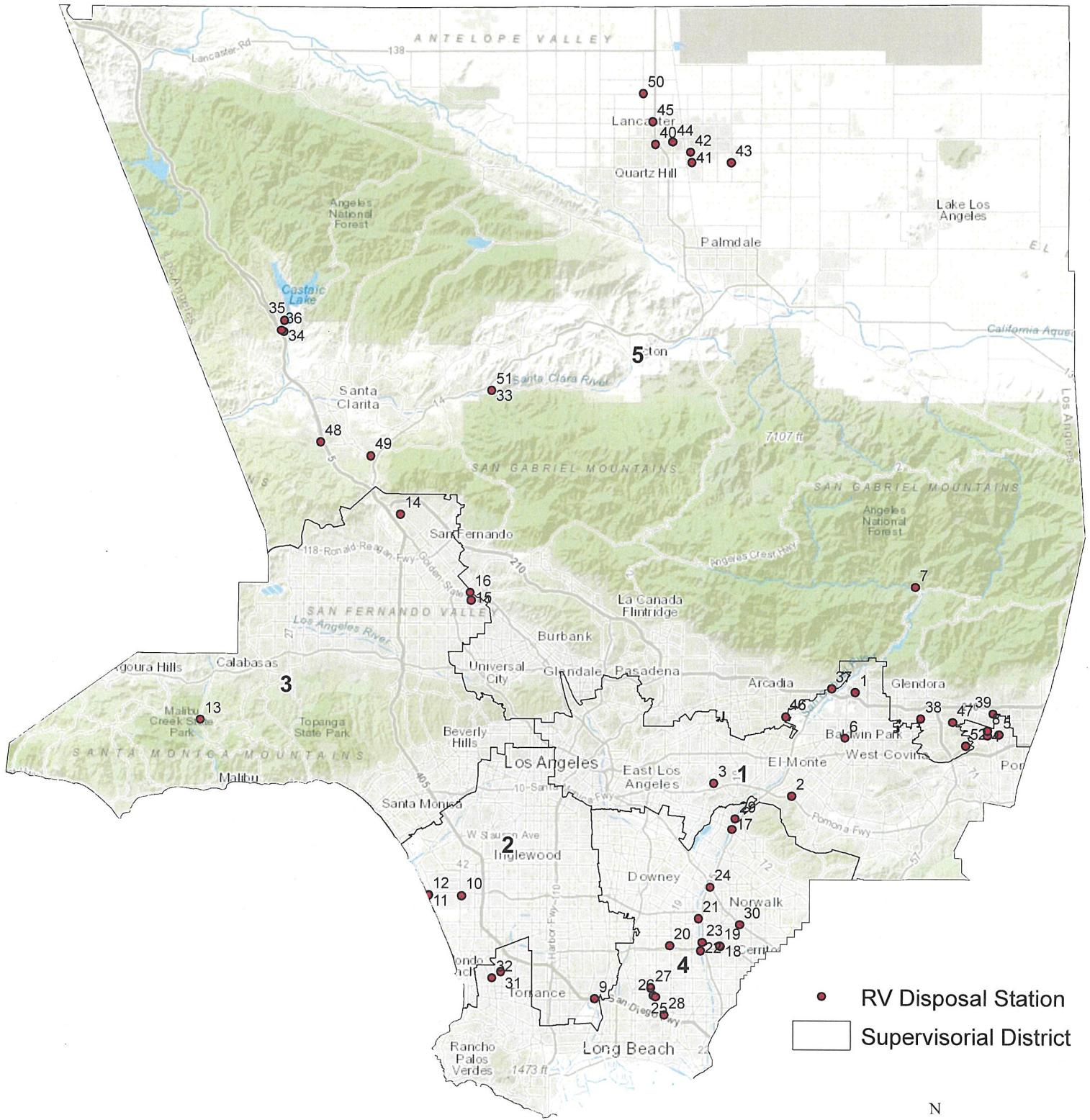
Public Health conducted an internet search to identify locations advertising services as an RV dump station. A total of 54 locations were identified, the majority of which are in Supervisorial Districts 4 and 5 but at least four locations were identified in each supervisorial district. The businesses offering services included gas stations, auto repair businesses, RV sales and service centers, RV storage yards, campgrounds, two county fairgrounds, and a municipal treatment system. Disposal costs ranged from free up to \$40 per visit.

The option of providing payment vouchers to Persons Experiencing Homelessness living in RVs so they may utilize dump stations also comes with the following challenges:

- Limited number of dump stations in some supervisorial districts.
- Inconvenience of having the RV driven to the dump stations on a regular basis may result in illegal discharges of wastewater.
- If not serviced timely blackwater holding tanks may overflow resulting in nuisance odor complaints and unsafe living conditions.
- Contract monitoring requirements to ensure services billed to the county were performed.



RV SAFE DISPOSAL SITES



RV Safe Disposal Sites

ID	SD	RV Disposal Station	City	Address	Phone Number	Website	Fees/Cost (Per Visit)
1	1	Price Self Storage	Azusa	1110 W Foothill Blvd., Azusa, CA 91702	(626) 714-2459	https://www.priceselfstorage.com/azusa-self	
2	1	Wildwood Mobile Country Club	Hacienda Heights	901 S 6th Ave., Hacienda Heights, CA 91745	(626) 968-3338	https://www.mhivillage.com/parks/4923	
3	1	Alex's Auto Repair & Electric (ARCO)	Montebello	1761 N Paramount Blvd., Montebello, CA 90640	(323) 722-5252	N/A	\$30.00
4	1	Fairplex RV Park	Pomona	2200 N White Ave., Pomona, CA 91768	(909) 593-8915	fairplexrvpark.com	\$10.00
5	1	Garvey One Stop Auto	Pomona	2455 N Garvey Ave., Pomona, CA 91767	(909) 593-4376		
6	1	Sunset Service Center	West Covina	901 N Sunset Ave., West Covina, CA 91790	(626) 960-9229		
7	1	Camp Williams Resort	Azusa	24210 East Fork Rd., Azusa, CA 91702	(626) 910-1126	campwilliams.com	\$5.00
8	1	Tow Storage 1	La Verne	2557 Sierra Way, La Verne, CA 91750	(962) 690-4666	N/A	
9	2	Cruise America RV Rental & Sales	Carson	2232 E 23rd St., Carson, CA 90810	(310) 522-3870	https://www.cruiseamerica.com/rv-rental-locations/california/los-angeles-carson	
10	2	California Storage Masters	El Segundo	1921 E Maple Ave., El Segundo, CA 90245	(310) 707-1061 / (424)	https://www.rvcaliforniastorage.com/	\$0.00
11	2	Hyperion Sewage Treatment Plant	Playa Del Rey	12000 Vista Del Mar, Playa Del Rey, CA 90293	(310) 648-5000	https://locator.lacounty.gov/loc/location/3171717/hyperion-wastewater-treatment-plant	
12	2	Dockweiler Beach RV	Playa Del Rey	12001 Vista Del Mar, Playa Del Rey, CA 90293	(310) 322-4951	https://beaches.lacounty.gov/dockweiler-rv-park/	
13	3	Malibu Creek State Park	Calabasas	1925 Las Virgenes Rd., Calabasas	(818) 880-0667		\$10.00
14	3	All in Sanitation Services	Sylmar	13151 San Fernando, Sylmar, CA 91342	(800) 310-8988	https://benchmarkrv.com/	\$30 or Less
15	3	Benchmark RV Center & Storage	Sun Valley	11660 Tuxford St., Sun Valley, CA 91352	(818) 504-4813	https://kingkongtrailers.com/	\$20 or Less
16	3	King Kong RV	Sun Valley	8924 Lankershim Blvd., Sun Valley, CA 91352	(949) 672-1989	https://www.californiastorage.com/	\$20 or Less
17	4	Best RV & Self Storage	Whittier	5913 Esperanza Ave., Whittier, CA 90606	(562) 692-8887	https://totalstoragesolutions.com/storage-locations/california/whittier-storage-units/5913-esperanza-ave/	\$35.00 - \$40.00
18	4	Pioneer Chevron Service Station	Artesia	16725 Pioneer Blvd., Artesia, CA 90470	(562) 860-5718	http://storagealongbeach.com/pioneer-rv/	
19	4	Pioneer RV Storage	Artesia	16703 S Pioneer Blvd., Artesia, CA 90470	(562) 633-1371	weststorv.com	\$30.00
20	4	Affordable RV Storage	Bellflower	8839 Park St., Bellflower, CA 90706	(562) 924-1583	storageoutlet.net	\$35.00
21	4	Storage Outlet - Bellflower	Bellflower	10326 Foster Rd., Bellflower, CA 90706	(562) 925-0534	www.extraspace.com	
22	4	Extra Space Storage, Cerritos	Cerritos	10755 Artesia Blvd., Cerritos, CA 90810	(562) 865-9696	www.ironwoodrvstorage.com	
23	4	Ironwood RV Storage	Cerritos	16401 Pluma Ave., Cerritos, CA 90703	(562) 924-7870	https://www.giantrv.com/	
24	4	Giant RV	Lakewood	11111 Florence Ave., Downey, CA 90241	(562) 455-4114	https://www.coaststorageco.com/	
25	4	Coast Storage Company	Lakewood	3919 Pike Ave., Lakewood, CA 90712	(562) 421-1471		
26	4	Paramount Carson RV & Boat Storage	Lakewood	2626 Cover St., Lakewood, CA 90712	(562) 420-3009		
27	4	Cherry & Carson RV Storage	Long Beach	4160 Cherry Ave., Long Beach, CA 90807	(562) 264-5293		
28	4	Don Temple Storage	Long Beach	3750 E Spring St., Long Beach, CA 90806	(562) 684-2019	dontemplestorage.com	\$25.00
29	4	Beverly RV Storage	Pico Rivera	10000 Beverly Blvd., Pico Rivera, CA 90660	(562) 695-8085	https://www.beverlyrvstorage.com/	\$30 or less
30	4	El Monte RV	Santa Fe Springs	12818 Firestone Blvd., Santa Fe Springs, CA 90670	(888) 337-2214	http://www.elmonterv.com/	
31	4	SOS Storage Center	Torrance	19840 Pioneer Ave., Torrance, CA 90503	(310) 793-1600	https://www.sos-selfstorage.com/	
32	4	South Bay Storage- RV Recreational	Torrance	4011 Spencer Street, Torrance, CA 90503	(310) 371-7953		
33	5	River's End R.V. Park	Santa Clarita	13130 Soledad Cyn Rd, Santa Clarita	(661) 888-4272	Riversendrvpark@gmail.com	\$20.00
34	5	Castaic Lake RV Park	Castaic	31540 Ridge Route Rd., Castaic, CA 91384	(661) 257-4050	castaicrvpark.com	\$12.00
35	5	Castaic Lake State Recreation Area	Castaic	32132 Castaic Lake Dr., Castaic, CA 91384	(661) 257-4050	parks.lacounty.gov	\$7.00
36	5	Castaic Truck Stop	Castaic	31611 Castaic Rd., Castaic, CA 91384	(661) 295-1374	N/A	\$15.00
37	5	Mt. Olive Storage	Duarte	1500 Crestfield Dr., Duarte, CA 91010	(626) 357-4330	mtolivestorage.com	\$20.00
38	5	Arrow RV and Boat Storage	Glendora	1021 E Arrow Hwy., Glendora, CA 91740	(626) 335-6900	https://www.arrowrvandboatstorage.com/	
39	5	Casitas La Verne Mobile Village	La Verne	3945 Bradford St., La Verne, CA 91750	(909) 593-3011	https://www.santagocorp.com/2020/02/12/welcome-to-casitas-la-verne-mobile-home-estates/	
40	5	Amargosa Creek Storage	Lancaster	2060 W Ave 18, Lancaster, CA 93555	(661) 902-8046	N/A	\$15.00
41	5	Lance Camper Manufacturing Corp. Parts &	Lancaster	43014 Exchange Pl., Lancaster, CA 93536	(661) 941-9250	https://www.lancecamper.com/	Read Website
42	5	Lancaster Elks Lodge #1625	Lancaster	240 East Avenue K, Lancaster, CA 93535	(661) 942-1625	http://www.elkslodge1625.org/ElksNewAmenities.html	Free
43	5	Lancaster National Soccer Center	Lancaster	43000 30th Street East, Lancaster, CA 93535	(661) 723-6192	http://www.lancastersoccercenter.com/	
44	5	Purely Storage	Lancaster	44130 10th Street West, Lancaster, CA 93534	(661) 940-5005	https://www.purelystorage.com/self-storage-lancaster-ca-81307	\$10.00
45	5	Rider's Choice Motorcycle & RV Center	Lancaster	2337 W Avenue I, Lancaster, CA 93534	(661) 942-1211	ridderschoice661.com	\$20.00
46	5	Dry Dock Storage	Monrovia	3131 S Peck Rd., Monrovia, CA 91016	(626) 445-8762	drydockstorage.com	\$25.00
47	5	Storage Centers	San Dimas	195 E Arrow Hwy., San Dimas, CA 91773	(909) 599-5066	https://totalstoragesolutions.com/storage-locations/california/san-dimas-storage-units/195-e-arrow-rv-camping-world-of-valencia	Read Notes
48	5	Camping World of Valencia	Santa Clarita	24901 Pico Canyon Rd., Santa Clarita, CA 91381	(888) 654-5177		\$25.00
49	5	Newhall Shell Station	Santa Clarita	23502 Newhall Ave., Santa Clarita, CA 91321	(661) 259-6682	find.shell.com	\$5.00
50	5	Antelope Valley Fair Grounds	Lancaster	2551 W. Ave G-8, Lancaster, CA	(661) 206-0427	https://lavfair.com/rv-park/	\$20.00
51	5	Rivers End RV Park	Santa Clarita	13130 Soledad Canyon Road, Santa Clarita, CA 91390	(661) 888-4272	https://www.facebook.com/riversendscv/	\$20.00
52	5	East Shore RV Park	San Dimas	1440 Camper View Rd., San Dimas	(909) 599-8355	https://www.bonellillifsv.com/	\$10 or less